

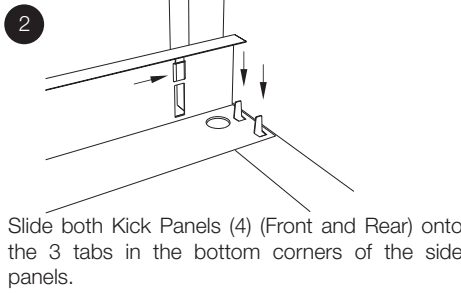
Flat Pack Tub & Cabinet Assembly Instructions

(see reverse for part numbers)

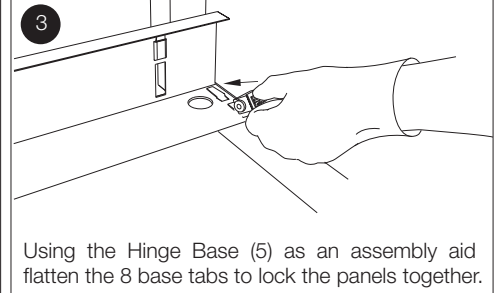
CAUTION: Whilst all care is taken during the manufacture of this product there may be sharp edges on some of the steel components. It is, therefore, recommended that to prevent injury suitable gloves are worn whilst assembling this product.

stylus

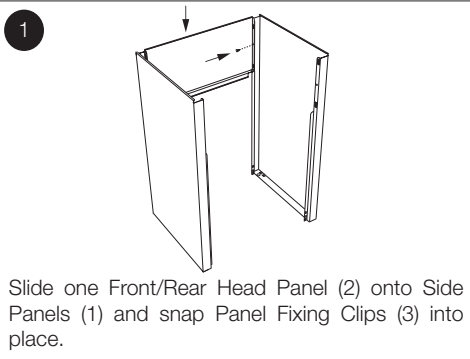
The Cabinet has been manufactured from quality materials. To ensure you receive the Cabinet in the same quality that it left our plant, it has been covered with a protective plastic material. Please remove this before assembly. **NOTE: The Tub and Cabinet shown being assembled in the following instructions is the 45L version. If you have purchased the 35L version, the part names and assembly sequence remain identical.**



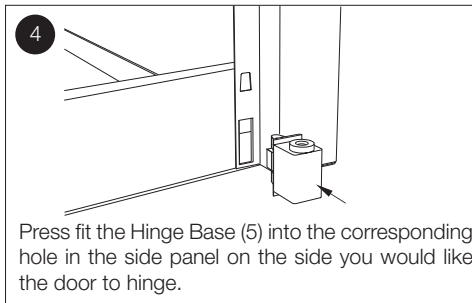
Slide both Kick Panels (4) (Front and Rear) onto the 3 tabs in the bottom corners of the side panels.



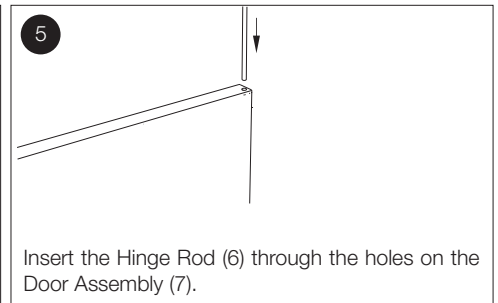
Using the Hinge Base (5) as an assembly aid flatten the 8 base tabs to lock the panels together.



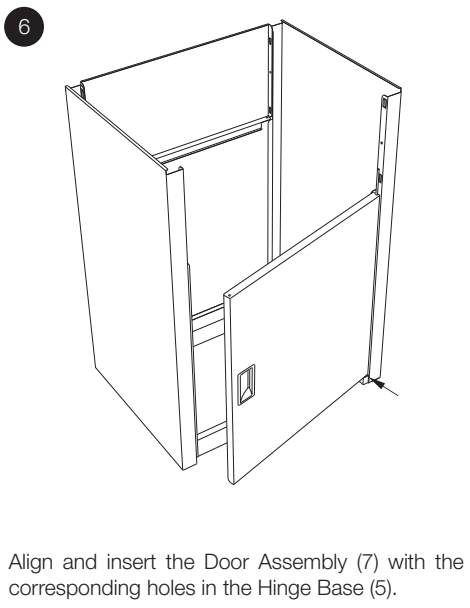
Slide one Front/Rear Head Panel (2) onto Side Panels (1) and snap Panel Fixing Clips (3) into place.



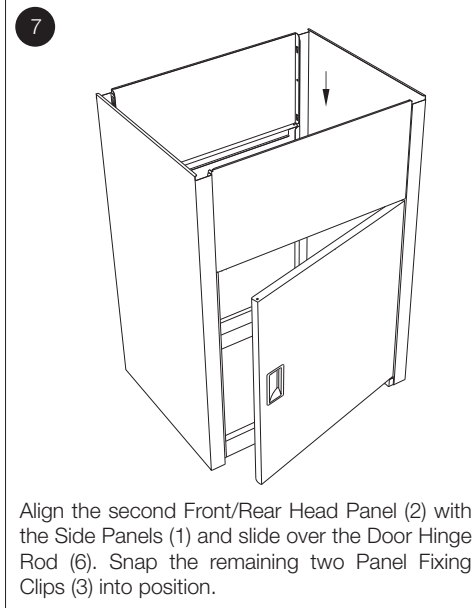
Press fit the Hinge Base (5) into the corresponding hole in the side panel on the side you would like the door to hinge.



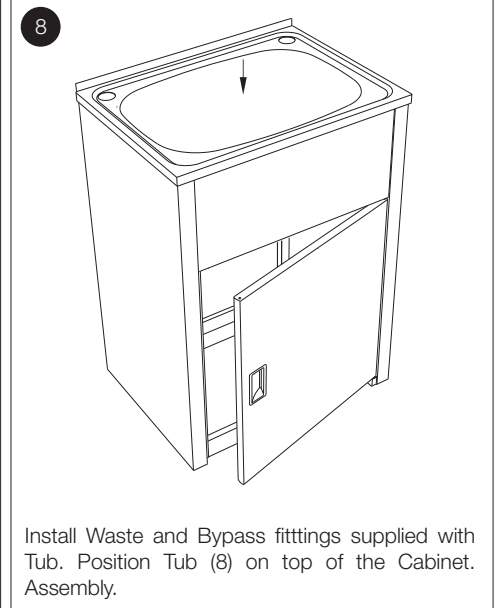
Insert the Hinge Rod (6) through the holes on the Door Assembly (7).



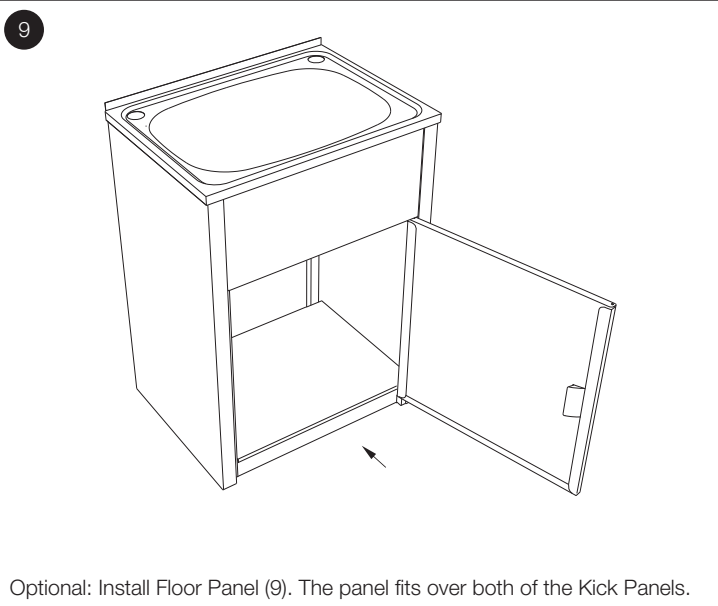
Align and insert the Door Assembly (7) with the corresponding holes in the Hinge Base (5).



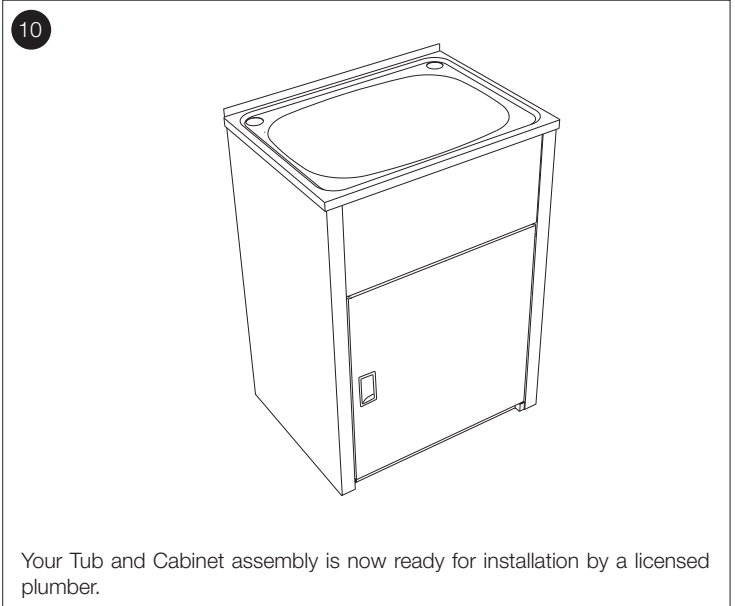
Align the second Front/Rear Head Panel (2) with the Side Panels (1) and slide over the Door Hinge (7). Snap the remaining two Panel Fixing Clips (3) into position.



Install Waste and Bypass fittings supplied with Tub. Position Tub (8) on top of the Cabinet Assembly.

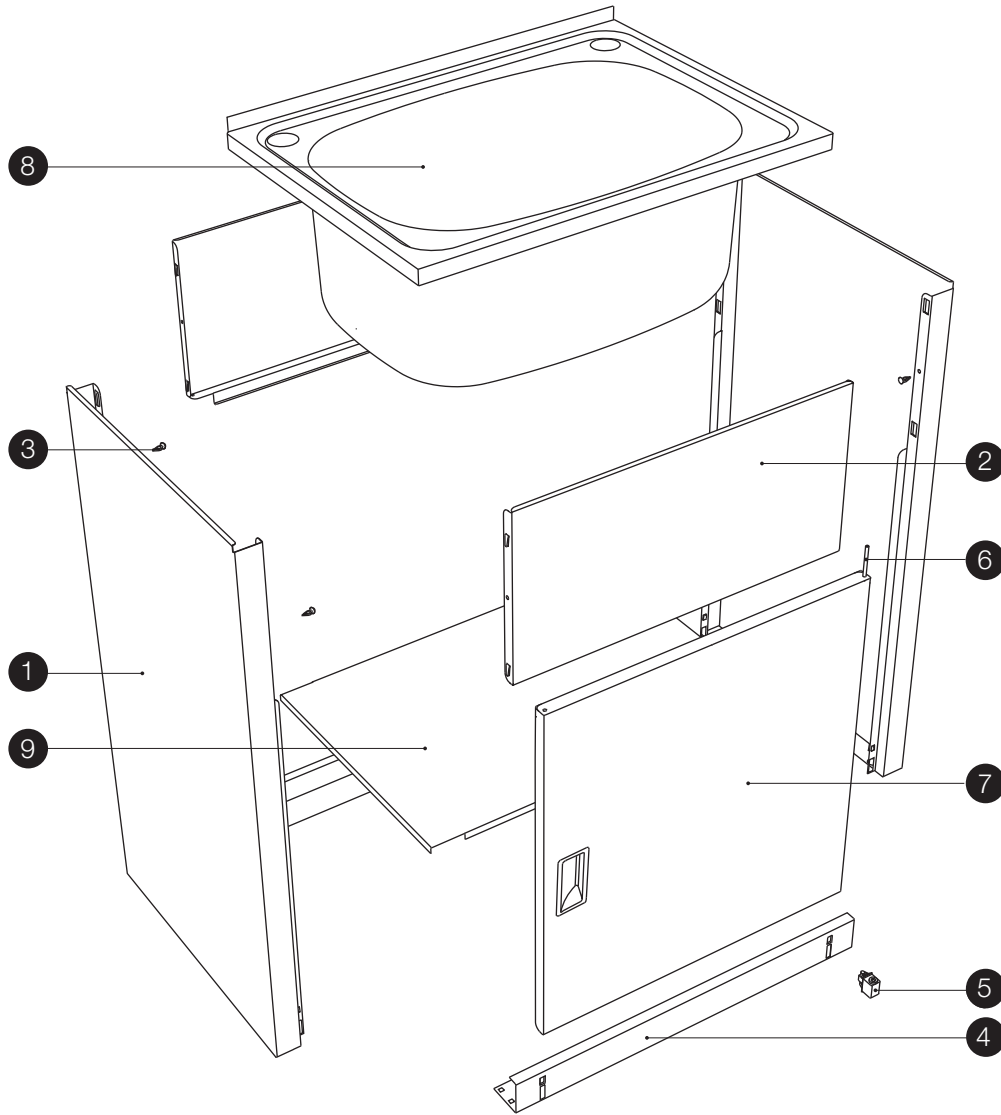


Optional: Install Floor Panel (9). The panel fits over both of the Kick Panels.



Your Tub and Cabinet assembly is now ready for installation by a licensed plumber.

Flat Pack Tub & Cabinet Assembly Instructions



No.	Parts List:	Qty
1	Side Panel	2
2	Front/Rear Head Panel	2
3	Panel Fixing Clips	4
4	Front/Rear Kick Panel	2
5	Hinge Base	1
6	Door Hinge Rod	1
7	Door Assembly (Includes Door, Handle and Magnetic Strips)	1
8	Tub	1
9	Floor Panel (Optional)	1

stylus